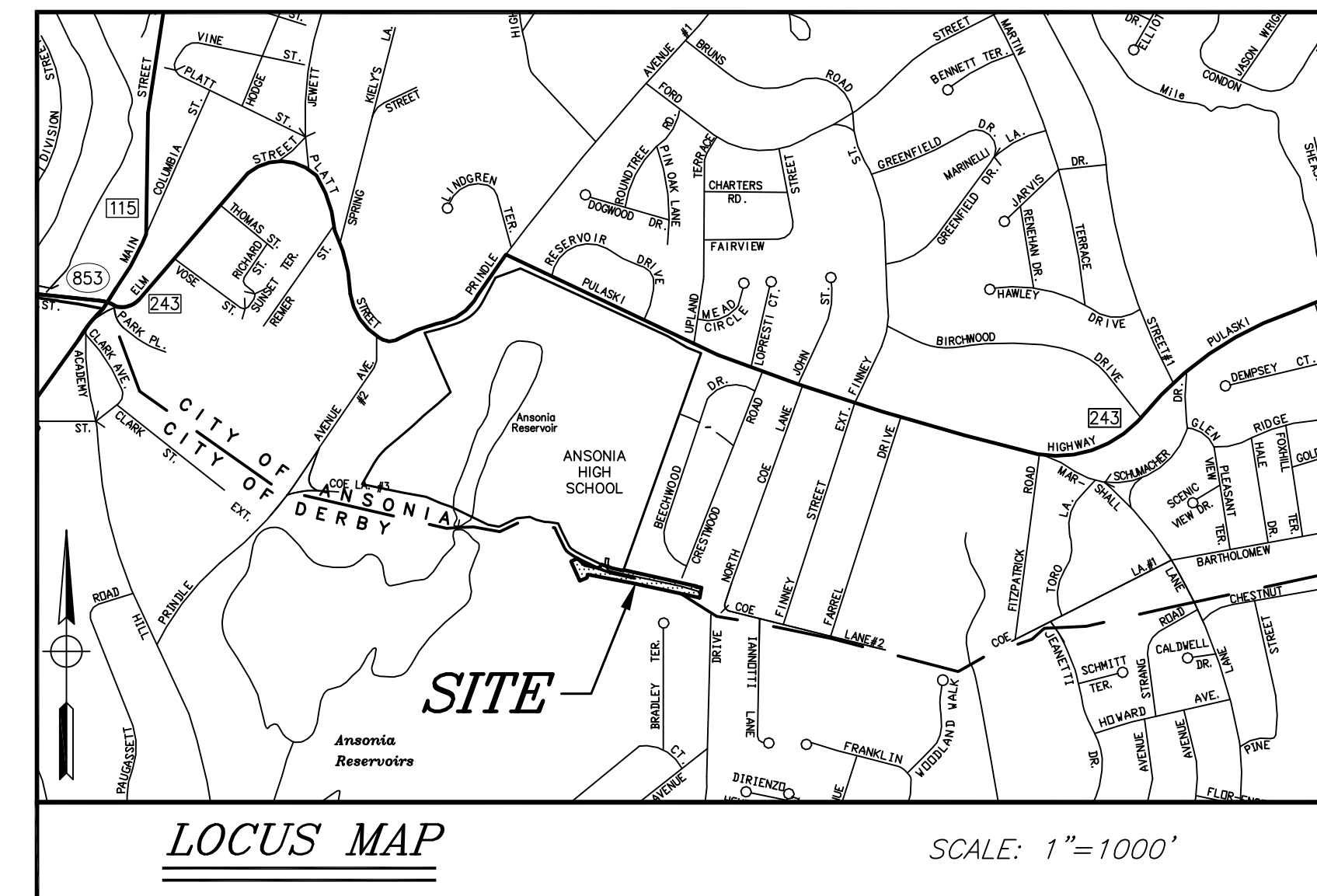


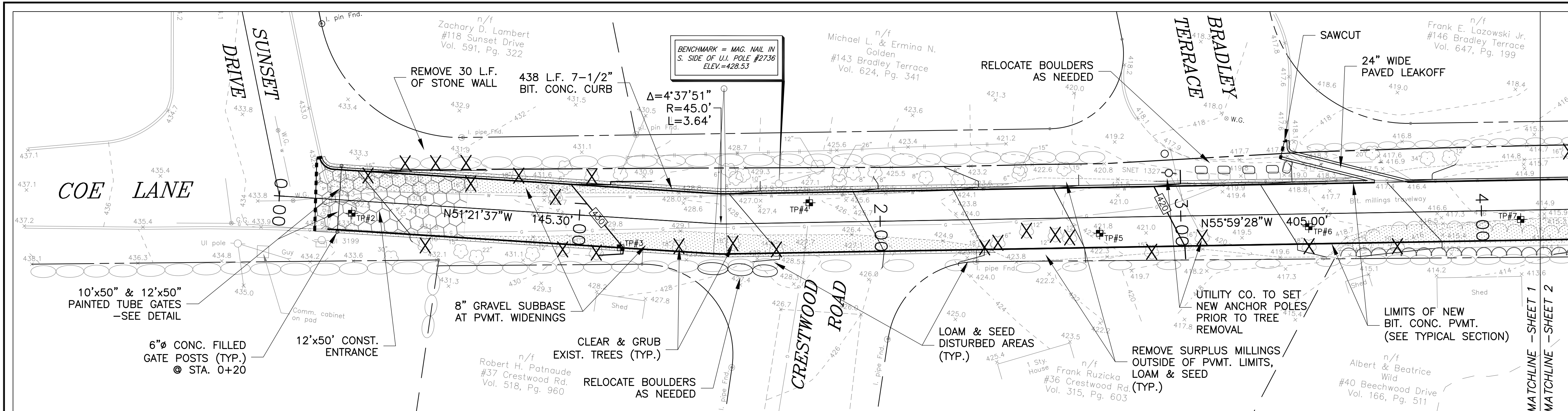
BID DOCUMENTS
CITY OF ANSONIA
COE LANE EMERGENCY ACCESSWAY
COE LANE - FROM SUNSET DRIVE TO AHS
ANSONIA & DERBY, CT

LIST OF DRAWINGS	
SHEET NO.	TITLE
CL - 1	PLAN AND PROFILE
CL - 2	PLAN AND PROFILE
CL - 3	DETAILS

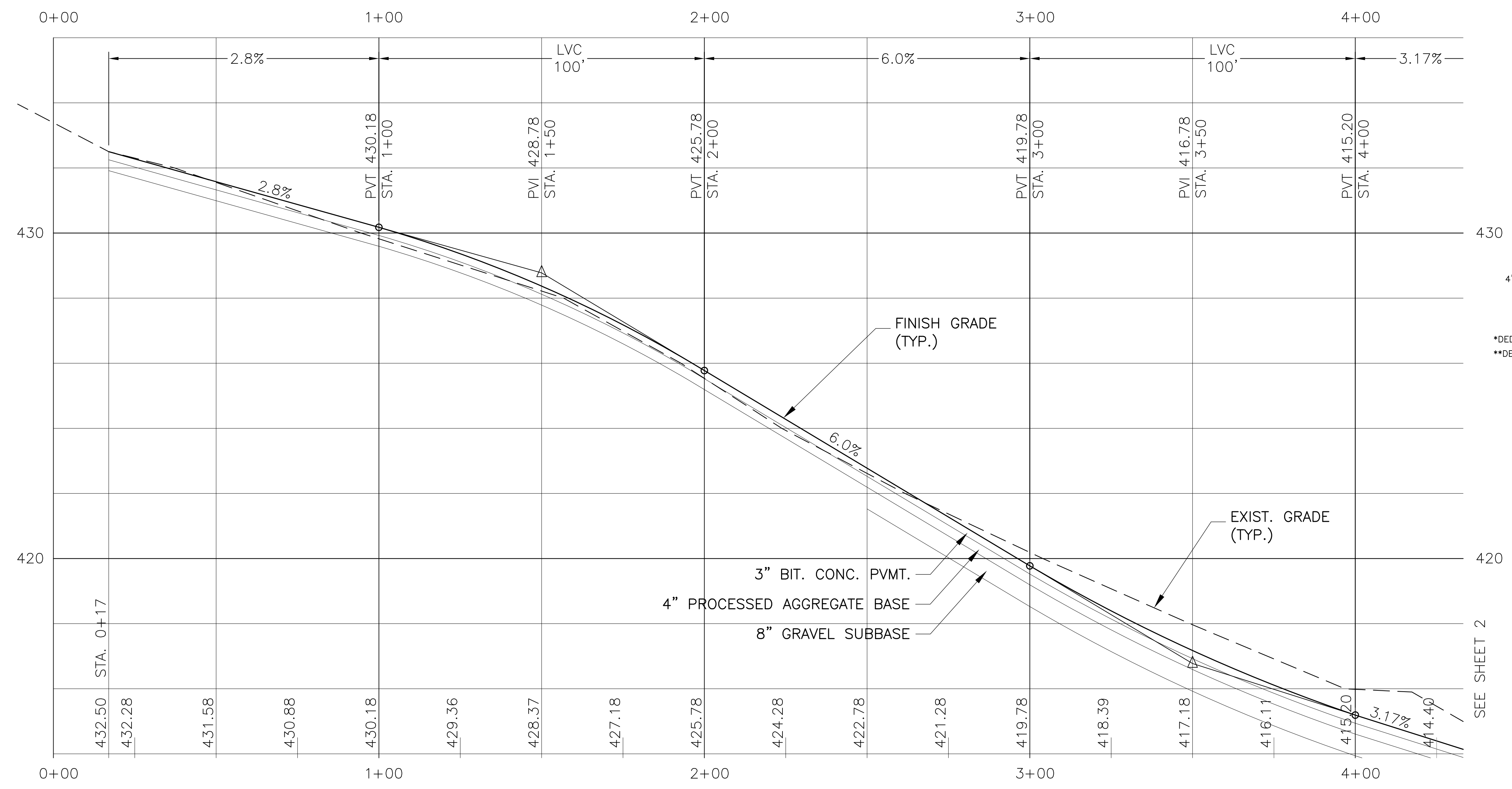


DONALD W. SMITH, JR., P.E.
 CONSULTING ENGINEER
 56 GREENWOOD CIRCLE
 SEYMOUR, CONNECTICUT 06483
 203-888-4904

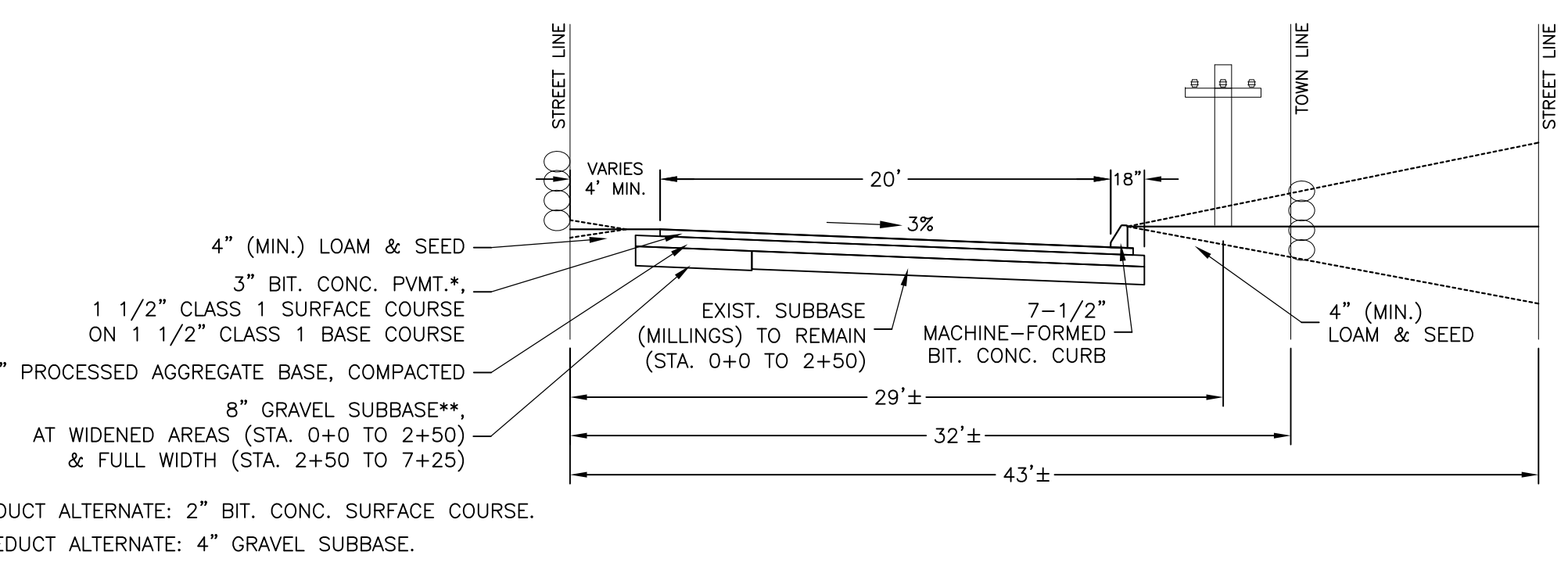
MAY 13, 2020



PLAN VIEW
SCALE: 1"=20'



PROFILE
HORIZONTAL SCALE: 1"=20'
VERTICAL SCALE: 1"=2'

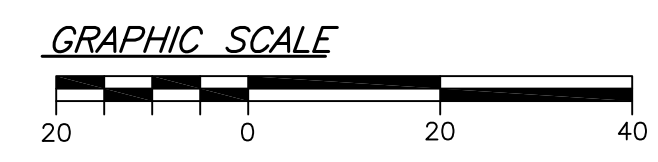


TYPICAL ACCESSWAY CROSS-SECTION
NOT TO SCALE

SEE SHEET CL-3 FOR
DETAILS, NOTES & LEGEND

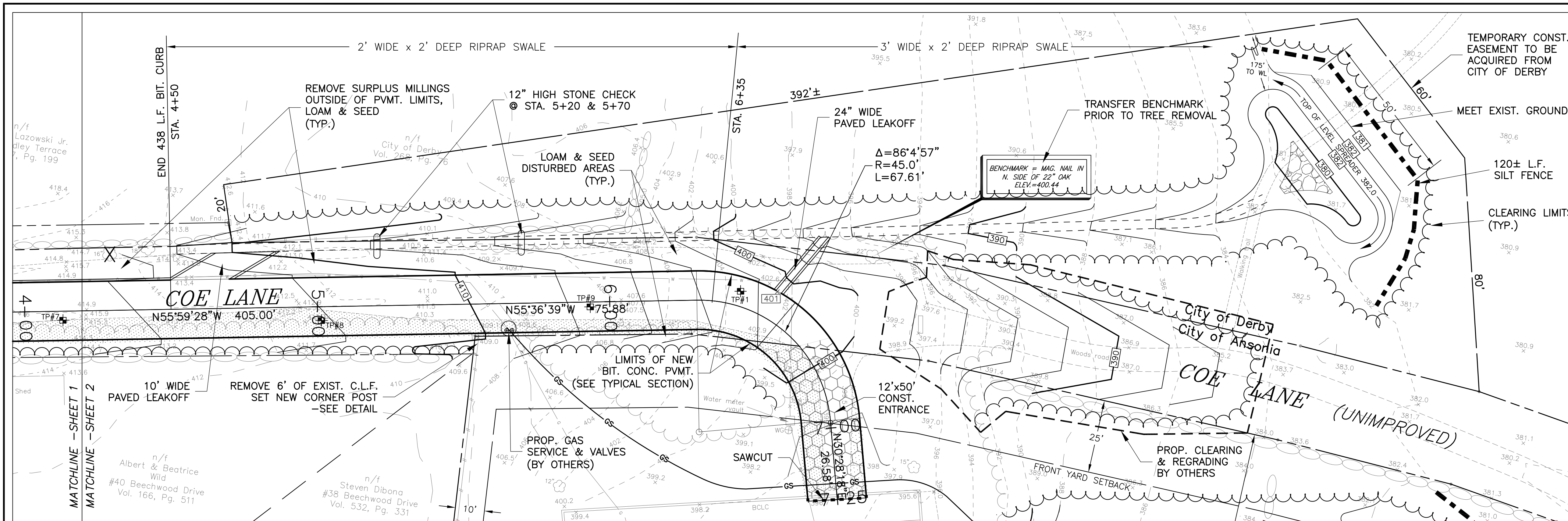
UTILITY NOTES

- COORDINATION SHALL BE MADE WITH EVERSOURCE ENERGY FOR THE NEW GAS SERVICE AND ASSOCIATED VALVING TO ANSONIA HIGH SCHOOL (STA. 5+65).
- COORDINATION SHALL BE MADE WITH FRONTIER COMMUNICATIONS PRIOR TO REMOVAL OF THE ANCHOR TREE (STA. 3+05).

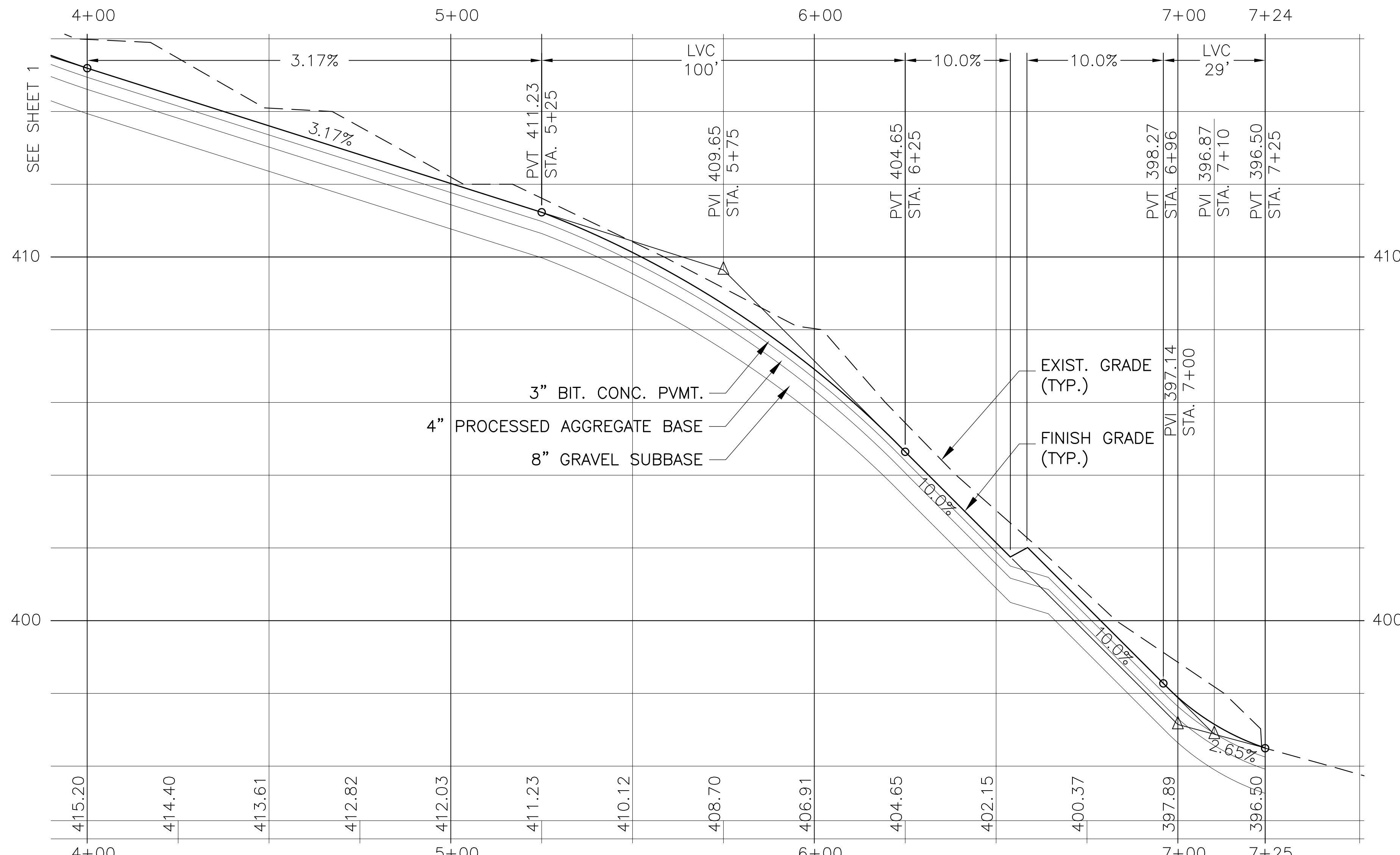


REVISIONS		
NO.	DESCRIPTION	DATE
1	Bid documents	5/13/20

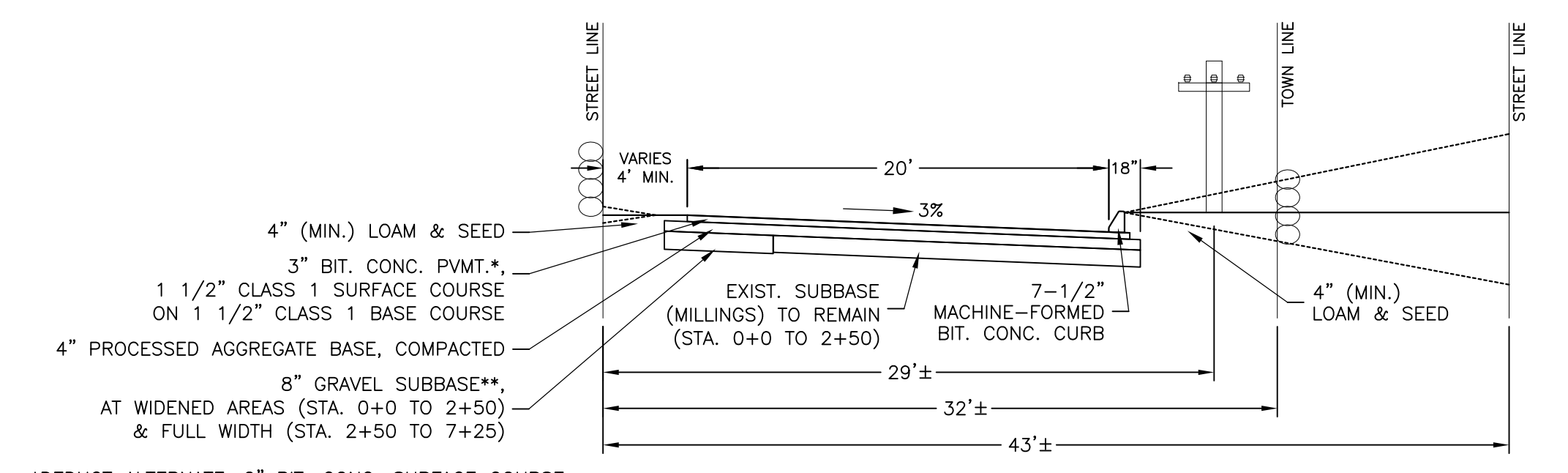
PLAN & PROFILE		Job No. 19-13
COE LANE ACCESSWAY		Scale: 1"=20'
ANSONIA HIGH SCHOOL		Date: 1/3/20
#20 PULASKI HIGHWAY, CT RT 243		Designed: D.W.S.
ANSONIA, CONNECTICUT		Drawn: K.D.K.
DONALD W. SMITH, JR., P.E.		Sheet: CL-1
CONSULTING ENGINEER		
56 GREENWOOD CIRCLE SEYMOUR, CT. 203-888-4904		



PLAN VIEW
SCALE: 1"=20'



PROFILE
HORIZONTAL SCALE: 1"=20'
VERTICAL SCALE: 1"=2'



TYPICAL ACCESSWAY CROSS-SECTION
NOT TO SCALE

*DEDUCT ALTERNATE: 2" BIT. CONC. SURFACE COURSE.
**DEDUCT ALTERNATE: 4" GRAVEL SUBBASE.

SEE SHEET CL-3 FOR
DETAILS, NOTES & LEGEND

UTILITY NOTES

- COORDINATION SHALL BE MADE WITH EVERSOURCE ENERGY FOR THE NEW GAS SERVICE AND ASSOCIATED VALVING TO ANSONIA HIGH SCHOOL (STA. 5+65).
- COORDINATION SHALL BE MADE WITH FRONTIER COMMUNICATIONS PRIOR TO REMOVAL OF THE ANCHOR TREE (STA. 3+05).



REVISIONS		
NO.	DESCRIPTION	DATE
1	Bid documents	5/13/20

PLAN & PROFILE
COE LANE ACCESSWAY
ANSONIA HIGH SCHOOL
#20 PULASKI HIGHWAY, CT RT 243
ANSONIA, CONNECTICUT
DONALD W. SMITH, JR., P.E.
CONSULTING ENGINEER
56 GREENWOOD CIRCLE SEYMOUR, CT. 203-888-4904

Job No. 19-13
Scale: 1"=20'
Date: 1/3/20
Designed: D.W.S.
Drawn: K.D.K.
Sheet: CL-2

SOIL TESTING RESULTS

SOIL TESTING PERFORMED BY THE OFFICE OF DONALD W. SMITH, JR., P.E., CONSULTING ENGINEER.

TP # 1
 0 - 8" MILLINGS
 8 - 44" BLACK GRANULAR FILL
 44 - 52" TOP OF ORIGINAL GROUND - BROWN SANDY LOAM

TP # 2
 0 - 6" MILLINGS
 6 - 16" MILLINGS AND 1-1/2" BROKEN STONE ON FILTER FABRIC, MISC FILL
 16 - 20" ORIGINAL GROUND, TOPSOIL, ROOTS
 20 - 24" BROWN SANDY LOAM

TP # 3
 0 - 12" TOPSOIL & ROOTS
 12 - 24" TAN SANDY LOAM

TP # 4
 0 - 14" MILLINGS
 14 - 22" BLACK GRANULAR FILL ON FILTER FABRIC
 22 - 30" TOPSOIL
 30 - 36" BROWN FINE SAND & SILT

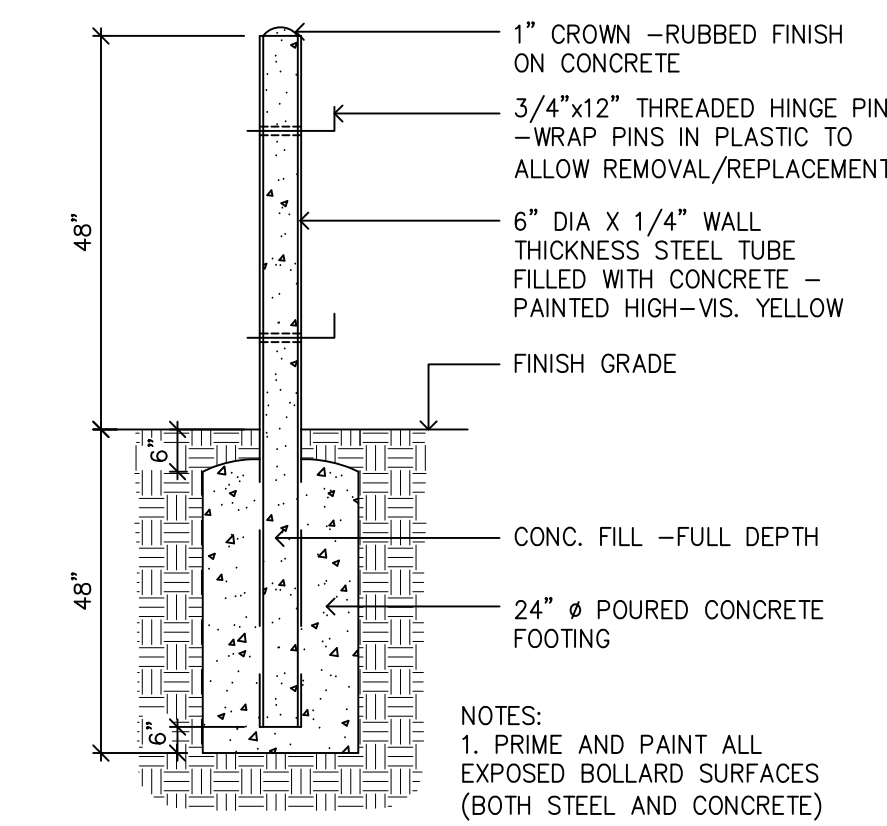
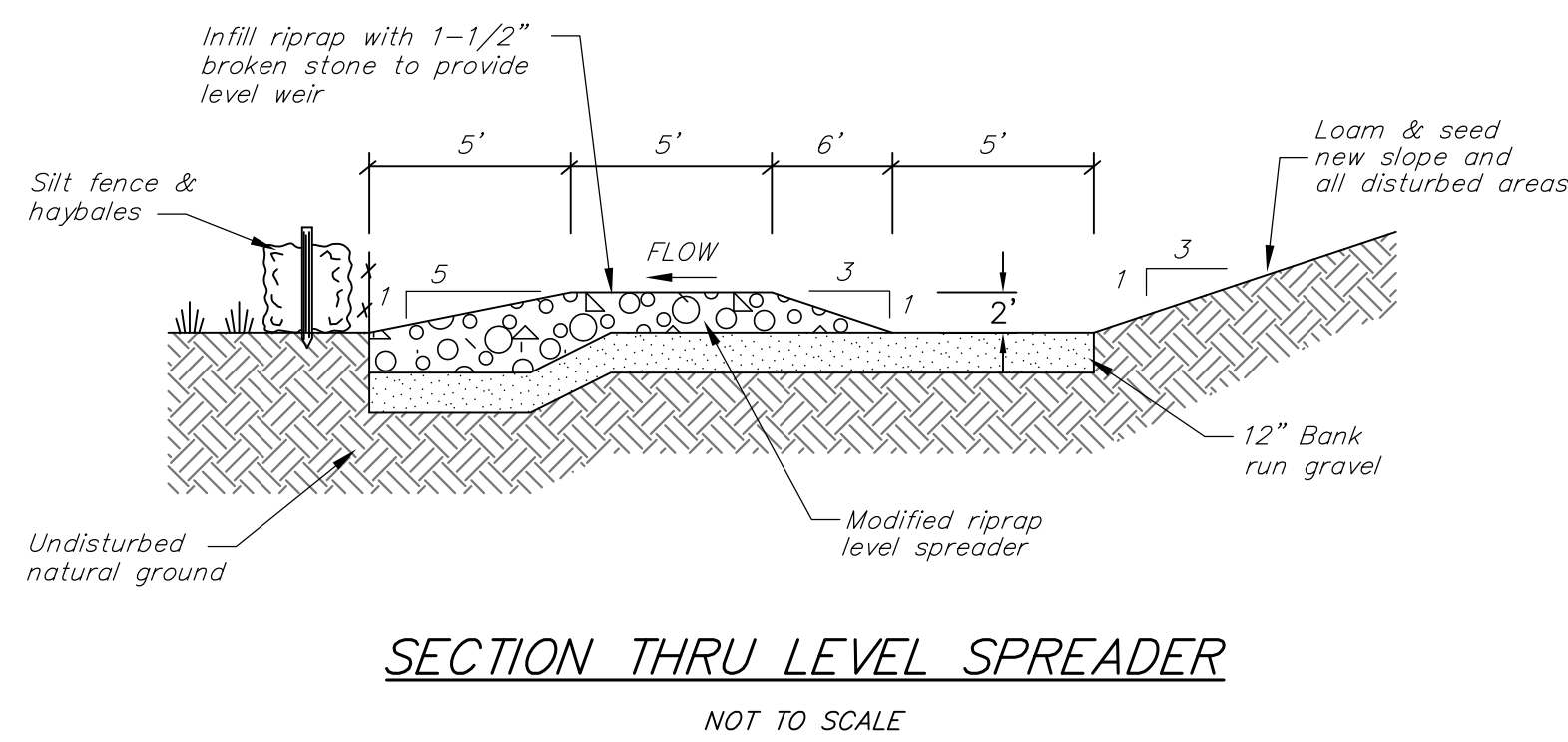
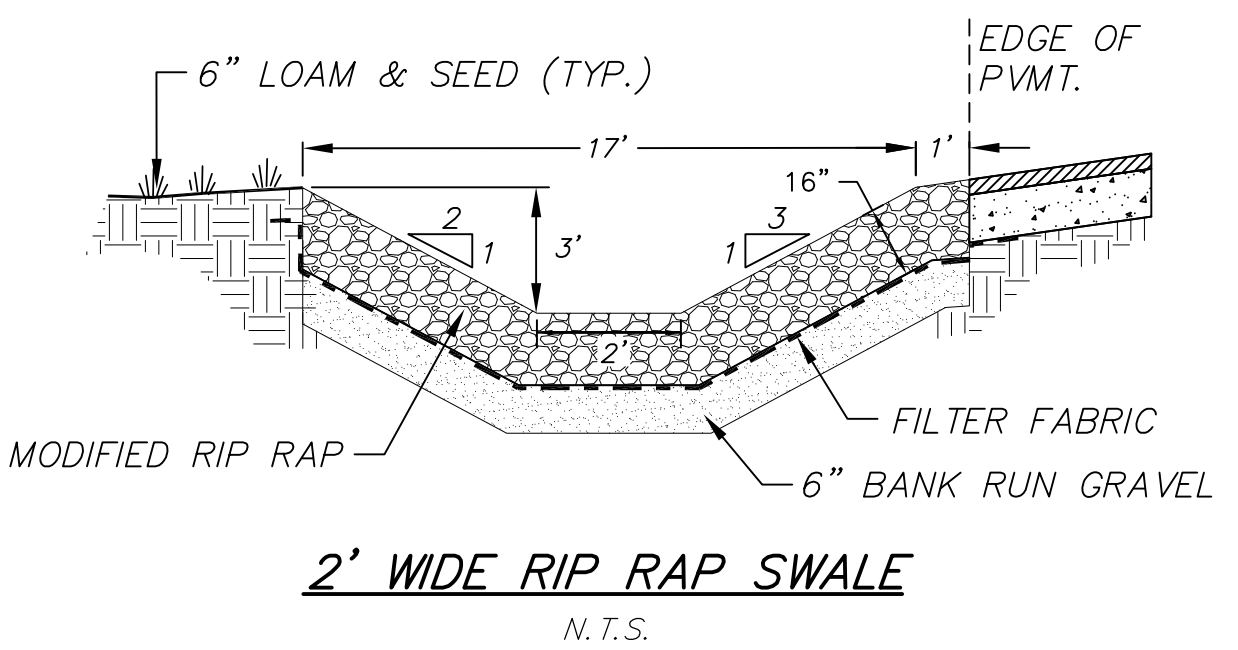
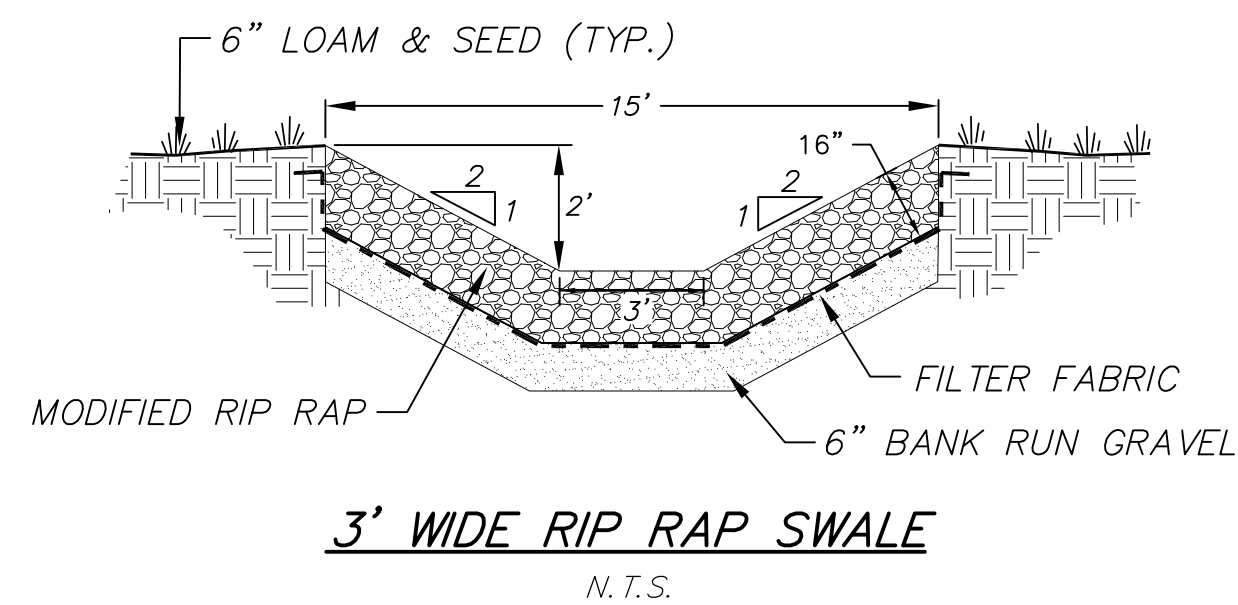
TP # 5
 0 - 16" MILLINGS
 16 - 32" TOPSOIL & ROOTS
 32 - 48" TAN SANDY LOAM

TP # 6
 0 - 21" MILLINGS
 21 - 24" MILLINGS AND 1-1/2" BROKEN STONE ON FILTER FABRIC
 24 - 38" BONEY TOPSOIL, BIG ROCK AT 38"

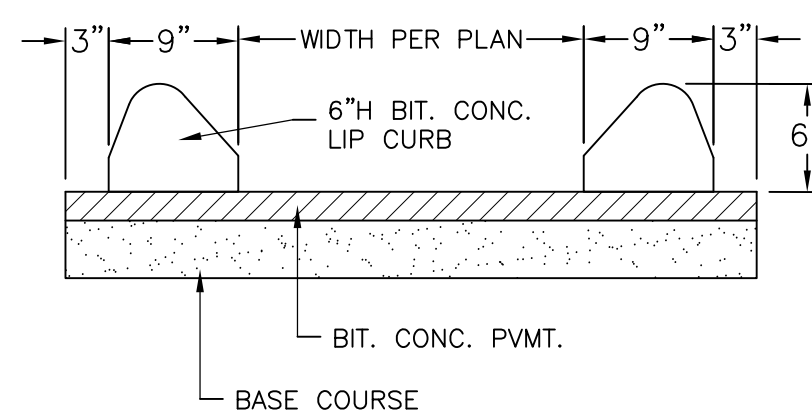
TP # 7
 0 - 24" MILLINGS
 24 - 27" ORIGINAL TRAIL - COURSE SAND & FINE GRAVEL
 27 - 32" TOPSOIL & ROOTS
 32 - 52" TAN SANDY LOAM

TP # 8
 0 - 6" MILLINGS
 6 - 14" TOPSOIL & ROOTS
 14 - 22" 1-1/2" BROKEN STONE
 22 - 30" TAN SANDY LOAM

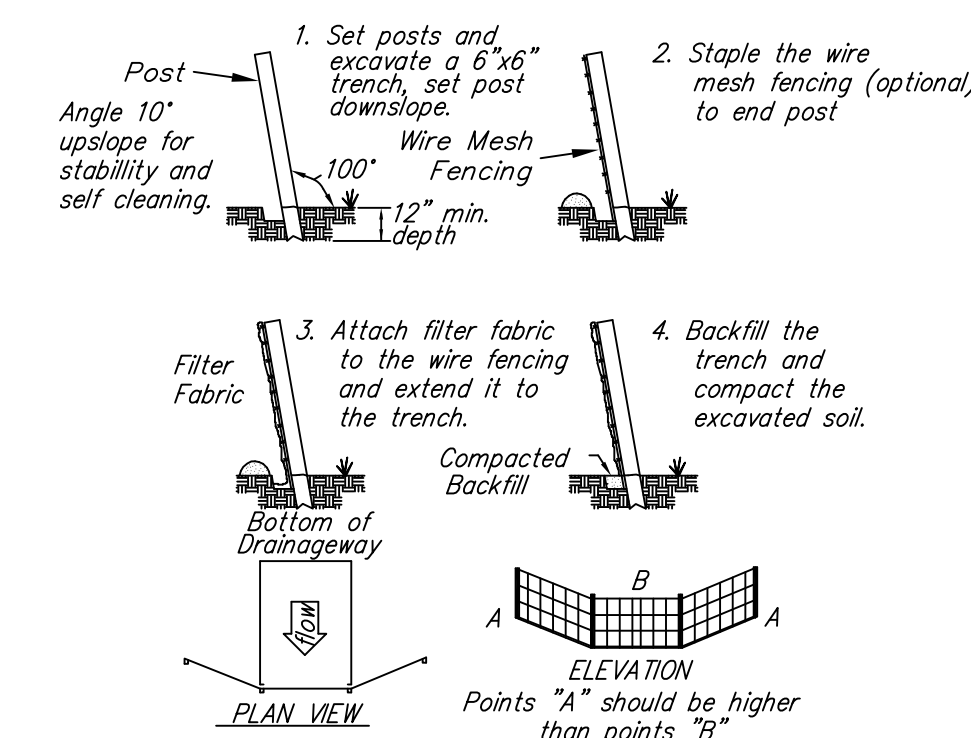
TP # 9
 0 - 6" MILLINGS
 6 - 18" TOPSOIL & MISC. FILL
 18 - 30" GRANULAR FILL
 30 - 42" DARK GREY-BRN BONEY SANDY LOAM - COMPACT



STEEL BOLLARD GATE POST
 N.T.S.



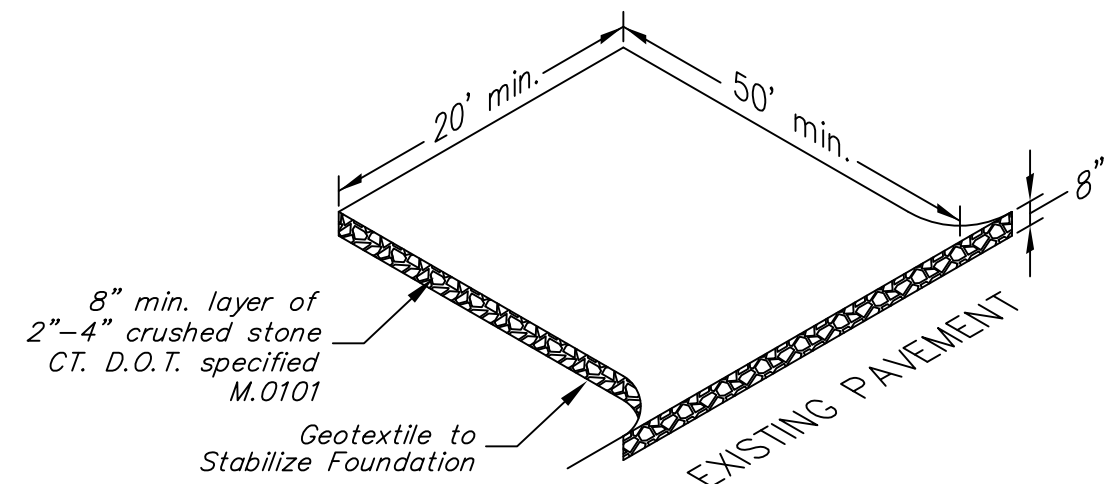
PAVED LEAKOFF CROSS-SECTION
 NOT TO SCALE



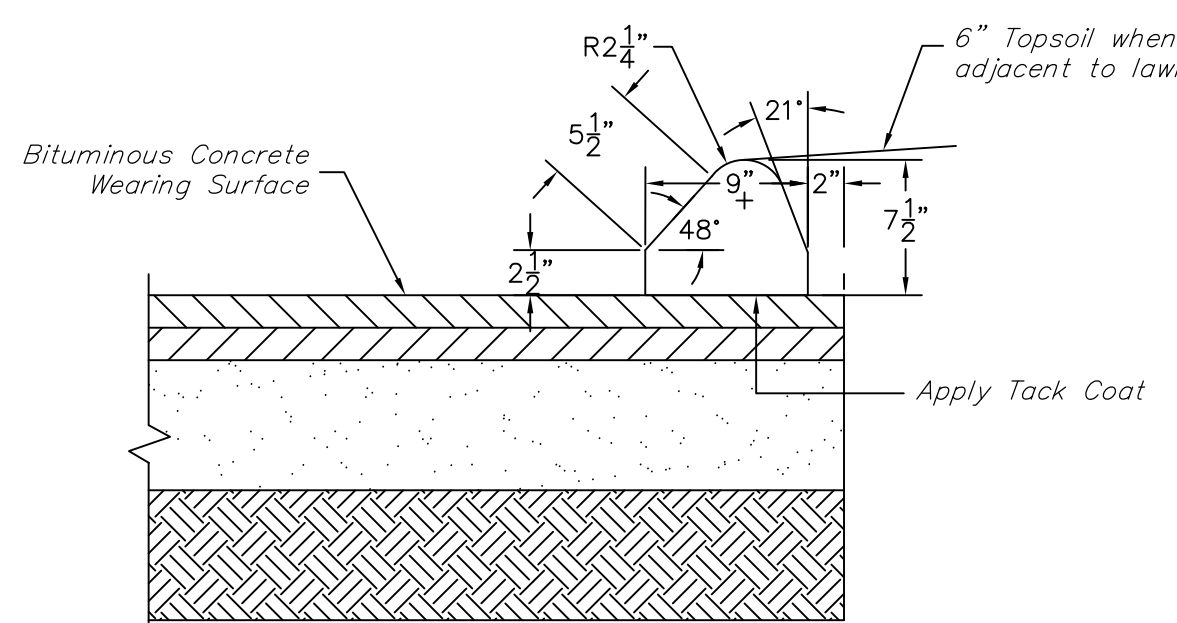
PLACEMENT AND CONSTRUCTION OF A SYNTHETIC FILTER BARRIER
 N.T.S.

Source: U.S. Department of Agriculture, Soil Conservation Service, Storrs, Connecticut.

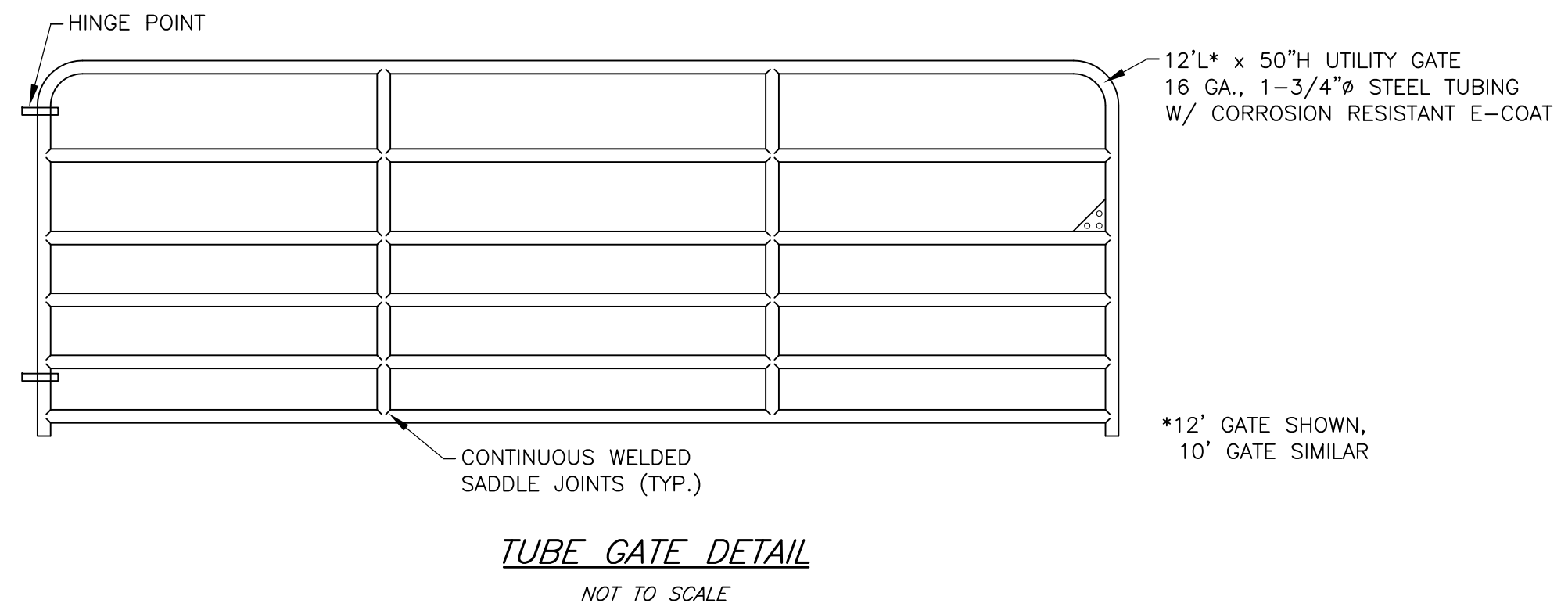
- EROSION CONTROL NOTES:**
- Land disturbance shall be kept to the minimum necessary for construction operations.
 - All soil erosion and sediment control measures must be constructed in accordance with the 2002 Connecticut Guidelines for Soil Erosion and Sediment Control by the Connecticut Council on Soil and Water Conservation in cooperation with the Connecticut Department of Environmental Protection.
 - Erosion and sediment control measures shall be installed as depicted on this plan, and maintained in an effective condition throughout the construction period. Additional measures shall be installed as necessary and required.
 - All disturbed areas shall be permanently stabilized as soon as practicable. Seed all disturbed areas with a temporary seed mixture within 7 days after the suspension of grading work in disturbed areas where the suspension of work is expected to be more than 30 days but less than 1 year.
 - The Site Contractor and Mr. Robert Evans, Director of Facilities, City of Ansonia Board of Education, are assigned the responsibility for implementing the control measures of this plan. This responsibility includes the installation and maintenance of control measures, informing all parties engaged on the construction site of the requirements and objectives of this plan, and notifying the Planning and Zoning Commission of the transfer of this responsibility, and for conveying a copy of this plan if title to the property is transferred.



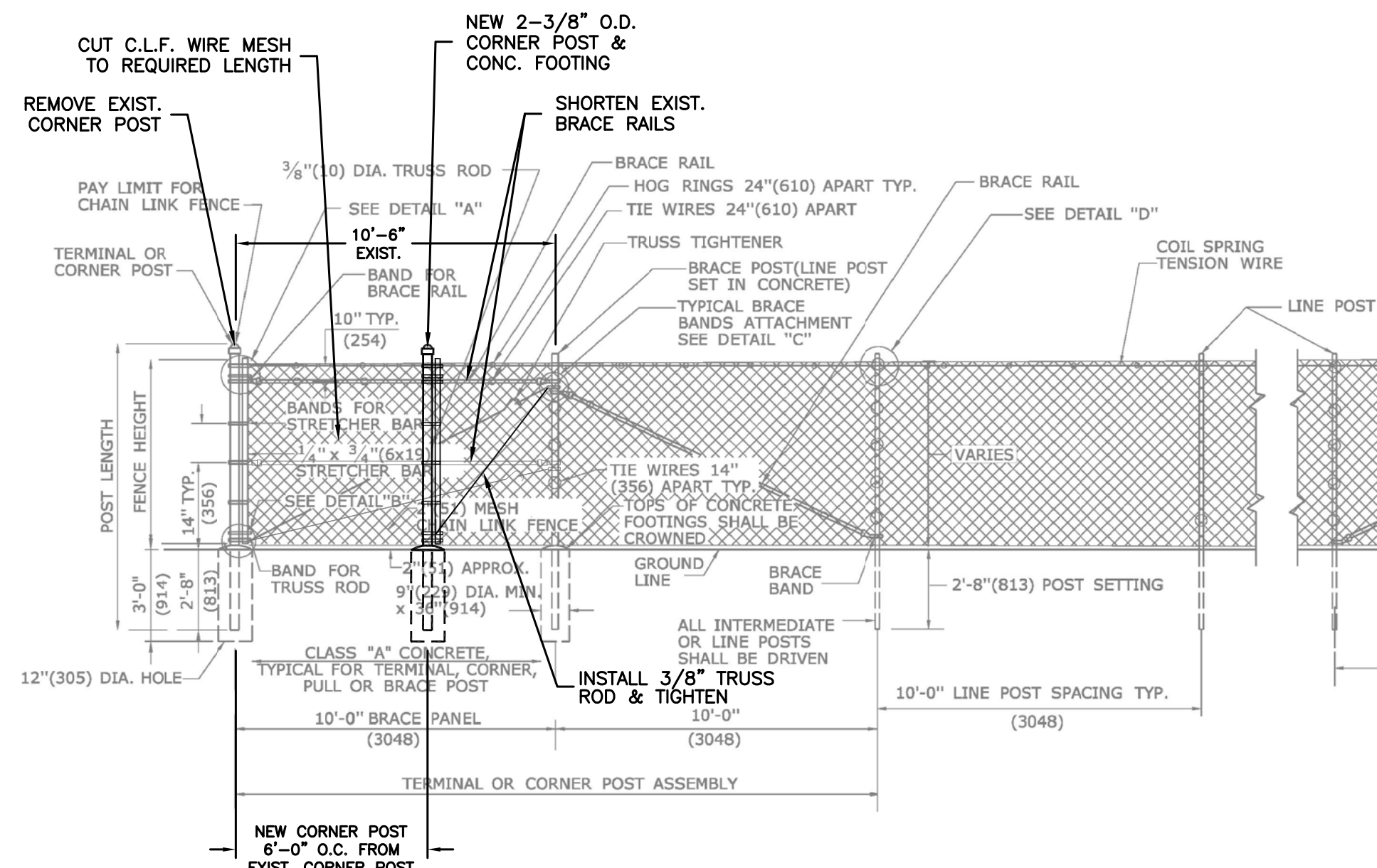
CONSTRUCTION ENTRANCE ANTI-TRACKING PAD
 N.T.S.



7-1/2" BIT. CONC. LIP CURB DETAIL
 N.T.S.



TUBE GATE DETAIL
 NOT TO SCALE



C.L.F. SHORTENING DETAIL
 NOT TO SCALE

- NOTES:**
- Base map provided by Horbal & Judson Land Surveyors & Associates, 52 Main Street, Seymour, Connecticut 06483, (203) 888-9660. This survey (map) has been prepared pursuant to the regulations of Connecticut State Agencies Sections 20-300b-1 through 20-300b-20 as revised 10-26-2018 and the Standards for Surveys and Maps in the State of Connecticut as adopted by the Connecticut Association of Land Surveyors, Inc.; It is a Topographic Survey conforming to Horizontal Accuracy Class A-2 and Topographical Accuracy Classes T-2 & T-D (See legend). Boundary lines depicted are based upon a Resurvey.
 - Reference Maps:
 - Map entitled "Topographic Survey prepared for the City of Ansonia, Ansonia High School & Coe Lane, Ansonia & Derby, Connecticut," Sheets 1 & 2 of 2, Scale 1" = 20', Dated 12/19/2019, by Horbal & Judson Land Surveyors & Associates, 52 Main Street, Seymour, Connecticut 06483, (203) 888-9660.
 - Existing Zone: Residence District "A".
 - Ansonia High School Total Area: 59.24 acres.
 - Elevations are based on NGVD '29 see reference map.
 - All utilities are not shown. Subsurface utilities were compiled from parcel evidence, record drawings, and surficial evidence located during the field survey. The surveyor has not physically exposed the subsurface utilities and makes no guarantee that the subsurface utilities depicted hereon comprise all such utilities within the surveyed area, either in service or abandoned. The surveyor further does not warrant or guarantee that the subsurface utilities are in the exact location depicted. Any contractors are required to utilize "Call Before You Dig" one call system 1-800-922-4455 prior to any excavation for the purpose of verifying the subsurface utilities in the area.

REVISIONS			DETAILS		Job No. 19-13
NO.	DESCRIPTION	DATE			Scale: As Noted
1	C.L.F. detail	1/29/20	COE LANE ACCESSWAY ANSONIA HIGH SCHOOL #20 PULASKI HIGHWAY, CT RT 243 ANSONIA, CONNECTICUT DONALD W. SMITH, JR., P.E. CONSULTING ENGINEER 56 GREENWOOD CIRCLE SEYMOUR, CT. 203-888-4904		Date: 1/3/20
2	Bid documents	5/13/20			Designed: D.W.S.
					Drawn: K.D.K.
					Sheet: CL-3

LEGEND

<ul style="list-style-type: none"> Mon. Monument Iron Pipe Iron Pin Property Line Adjacent Property Line Fence Stone Wall Tree with D.B.H. Gas service location Edge of woods Concrete Curb Guide rail Stormwater Sewer Pipe Underground Electric Wire Overhead Electric Wires Water main Gas main Sanitary Sewer Pipe Wetlands Wetland Boundary w/flag # 	<ul style="list-style-type: none"> FNTR Utility Pole w/owner Utility pole with guy wire M.H. Manhole C.B. or L.I. Catch Basin or Lawn Inlet W.G. Water Gate Valve Light Post Clean Out C.C. Sanitary Sewer Lateral G.G. Gas Gate Valve D.W.M. Detectable warning mat GS Gas Service Lateral WS Water Service Lateral San. Sewer Lateral 100' 10 foot contour with elevation 162' 2 foot contour with elevation 161' 1 foot contour with elevation 162' Spot elevation 162' Proposed 2 foot contour 160' Proposed 10 foot contour FB Flood Boundary Town line 	<ul style="list-style-type: none"> Fnd. Found n/f Now or Formerly 6' W.W.F. Woven Wire Fence w/ height w/ Roof leader Conc. Concrete P.V.C. Polyvinyl Chloride Pipe R.C.P. Reinforced Concrete Pipe H.D.P.P. High Density Plastic Pipe D.I.P. Ductile Iron Pipe San. Sanitary Inv. Invert El. or Elev. Elevation Bit. Bituminous Conc. Concrete Mas. Masonry Bitum. Bituminous Concrete Lip Curb CC Concrete Curb Typ. Typical Ex. Existing
---	---	--